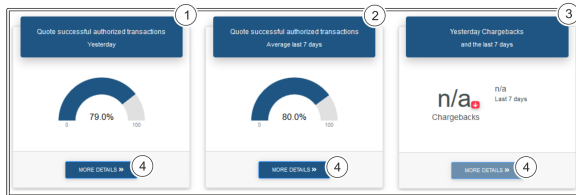


# Dashboard overview screen

The evaluation in the dashboard shows you the authorised, captured and refunded transactions from the previous day in comparison to the previous week.

## Successfully authorised transactions

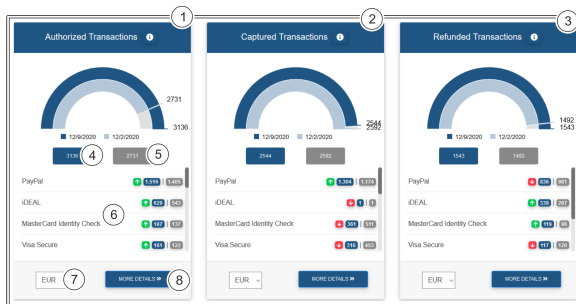
The display shows you the successfully authorised transactions as a percentage and the number of chargebacks from the previous day and from the previous week.



1. Successfully authorised transactions from the previous day as a percentage
2. Average number of successfully authorised transactions for the previous 7 days as a percentage
3. Number of chargebacks from the previous day and the previous week
4. More Details opens the [Overview of all operations subpage](#)

## Weekly change in transactions

The weekly changes in the authorised, captured and refunded transactions by paymethod from the previous day and the previous week are shown to you.



1. Authorised transactions from the previous day in dark blue compared with the previous week in light blue
2. View captured transactions
3. View refunded transactions
4. Number of transactions from the previous day
5. Number of transactions from the previous week
6. Paymethods
7. [Filter setting](#) for the currency
8. More Details opens the [Overview of all operations subpage](#)

### **i** Paymethods

The green arrow pointing upwards shows an increase in use of the paymethod in comparison to the previous week, while the red arrow pointing downwards shows a decrease in use. The absolute figures from the previous day appear in dark blue and the figures from the previous week appear in grey next to the arrows.

### **i** Application Button

The button at the bottom allows you to jump to the corresponding page within the application. You must be logged in to jump to the corresponding page within the application.

Computop Analytics

## On this page

- [Successfully authorised transactions](#)
- [Weekly change in transactions](#)
- [Transaction sum trend](#)
- [Ranking of the number of operations per week](#)
- [Operations by country](#)

## In this section

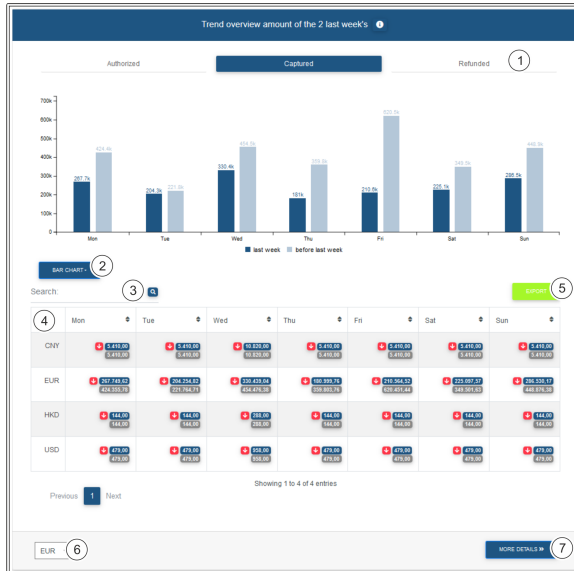
- [Dashboard - Starting Page](#)
- [Dashboard overview screen](#)
- [Key management \(optional\)](#)
- [Setting the dashboard filters](#)
- [Showing country analyses](#)
- [Showing the overview of all operations](#)
- [Showing the status of all operations](#)
- [Showing the trend](#)
- [Viewing statistics using the dashboard \(optional\)](#)

### **i** Filter setting for the currency

By changing the currency you are automatically [setting a filter](#).

## Transaction sum trend

The evaluation shows you the authorised, captured and refunded transactions from the previous week in comparison to two weeks ago as a sum per currency. The sum of all currencies can be found in the table directly below the chart.



1. Tab for authorised, captured and refunded transactions for a graphic overview of the transaction sums for the last 2 weeks
2. Select individual chart types
3. Search function
4. Data used as a basis for the chart; comparison of currencies used for the transactions on the day of the week
5. Data export of the current settings into an Excel file
6. [Filter setting for the currency](#)
7. More Details opens the [Overview of all operations subpage](#)

### **i** Current display

The field highlighted in dark blue shows you the current display of the transaction.

### **i** Setting filters

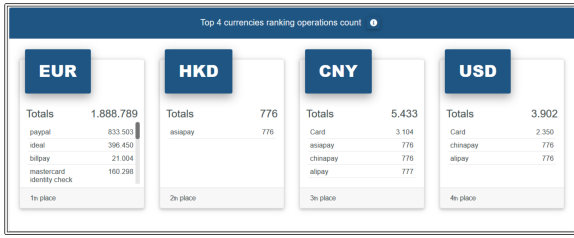
You can use the search function to enter a search term and set [filters](#) for the period.

### **i** Filter setting for the currency

By changing the currency you are automatically setting a [filter](#).

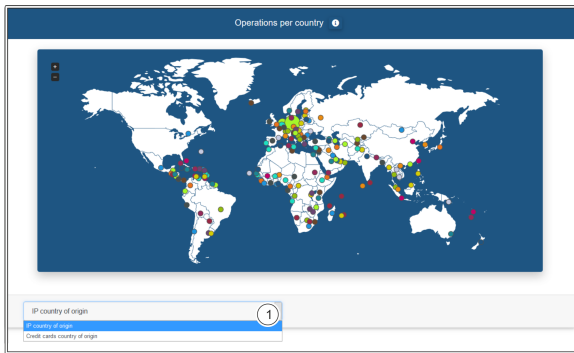
## Ranking of the number of operations per week

This evaluation provides you with an overview of the ranking of operations per currency. In addition, the number of operations is itemised by paymethod.



## Operations by country

The world map gives you a quick overview of the origins of the transactions. In this case, the capital city of the country of origin is highlighted and weighted in accordance with the number of operations. The larger the colour circle in a country is, the more payments were processed.



### 1. Country of origin

You can have the origin mapped according to the IP of the country of origin or the country of origin of the credit card.