

# Automatic SEPA Mandate Management

## About Automatic SEPA Mandate Management

SEPA Direct Debit payments do require a SEPA Mandate which needs to be presented to the consumer and needs to be approved.

SEPA mandates are valid for 36 months after approval and are extended by another period of 36 months after each use (SEPA direct debit payment using this mandate).

Computop Paygate supports automatic SEPA mandate handling based on consumer's IBAN.

This feature can be activated by [Computop Helpdesk](#) for your Merchant configuration.

- [About Automatic SEPA Mandate Management](#)
- [How it works](#)
  - [Form payments \(PaySdd / HPP\) to create / use a mandate](#)
    - [Sequence diagram](#)
  - [Direct debit payments \(edddirect.aspx\) to use an existing mandate](#)
    - [Sequence diagram](#)
  - [Languages](#)
- [Testing and samples](#)
  - [Testing](#)
  - [Samples](#)

## How it works

### Form payments (PaySdd / HPP) to create / use a mandate

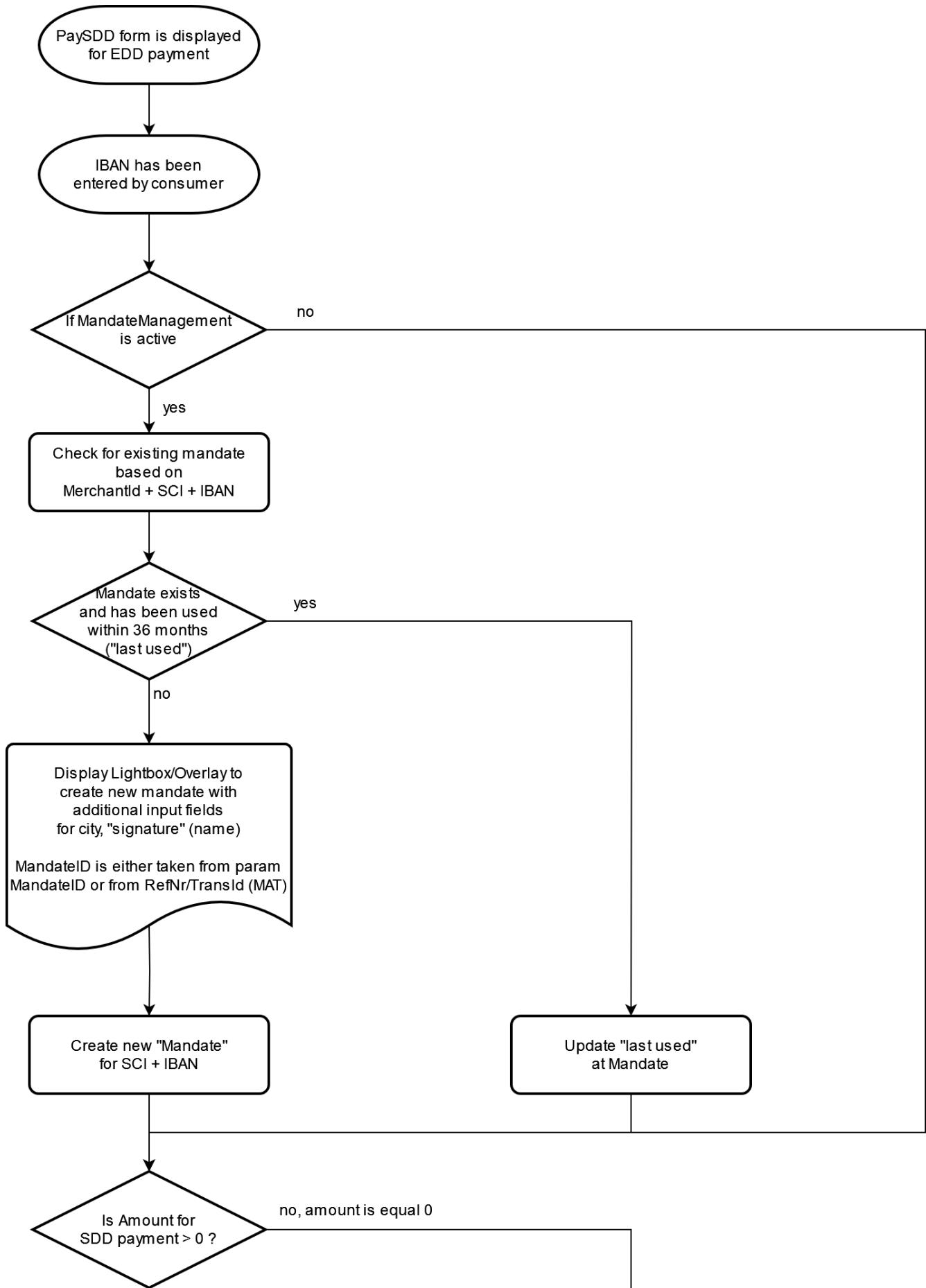
**i** For creating a mandate a form payment (PaySdd / HPP) has to be used, of course. So the consumer is in session and can be prompted to approve a new mandate.

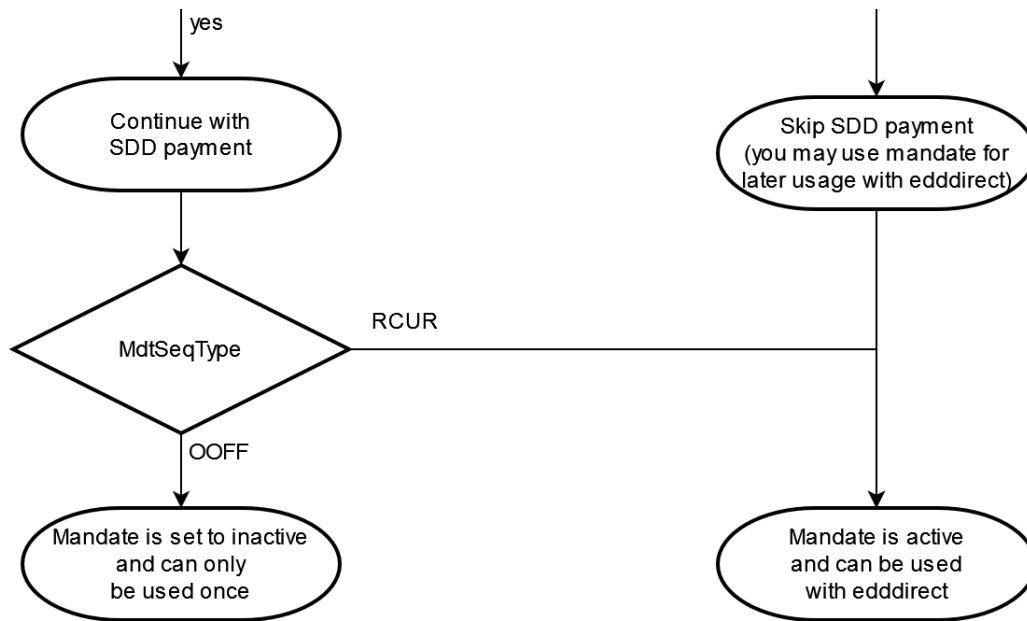
**i** If Computop Paygate already finds a valid mandate for that IBAN the consumer will not be prompted to approve the mandate and SEPA Direct Debit payment initiated.

**i** Template name (e.g. template=ct\_responsive) and Template language (e.g. language=en) are sent as plain parameters - not part of encrypted Len + Data.

- Automatic Computop Paygate SEPA Mandate Management can to be activated on your Merchant configuration
- Please contact [Computop Helpdesk](#) if you want to have that feature active.
- A mandate is checked based on the IBAN of the consumer
- If a mandate is already existing and has been used within the last 36 months this mandate will be used and extended
- If no valid mandate is found the consumer will be prompted to grant and approve a mandate for your merchant configuration.
- This mandate is then used to continue with SEPA Direct Debit payment

## Sequence diagram



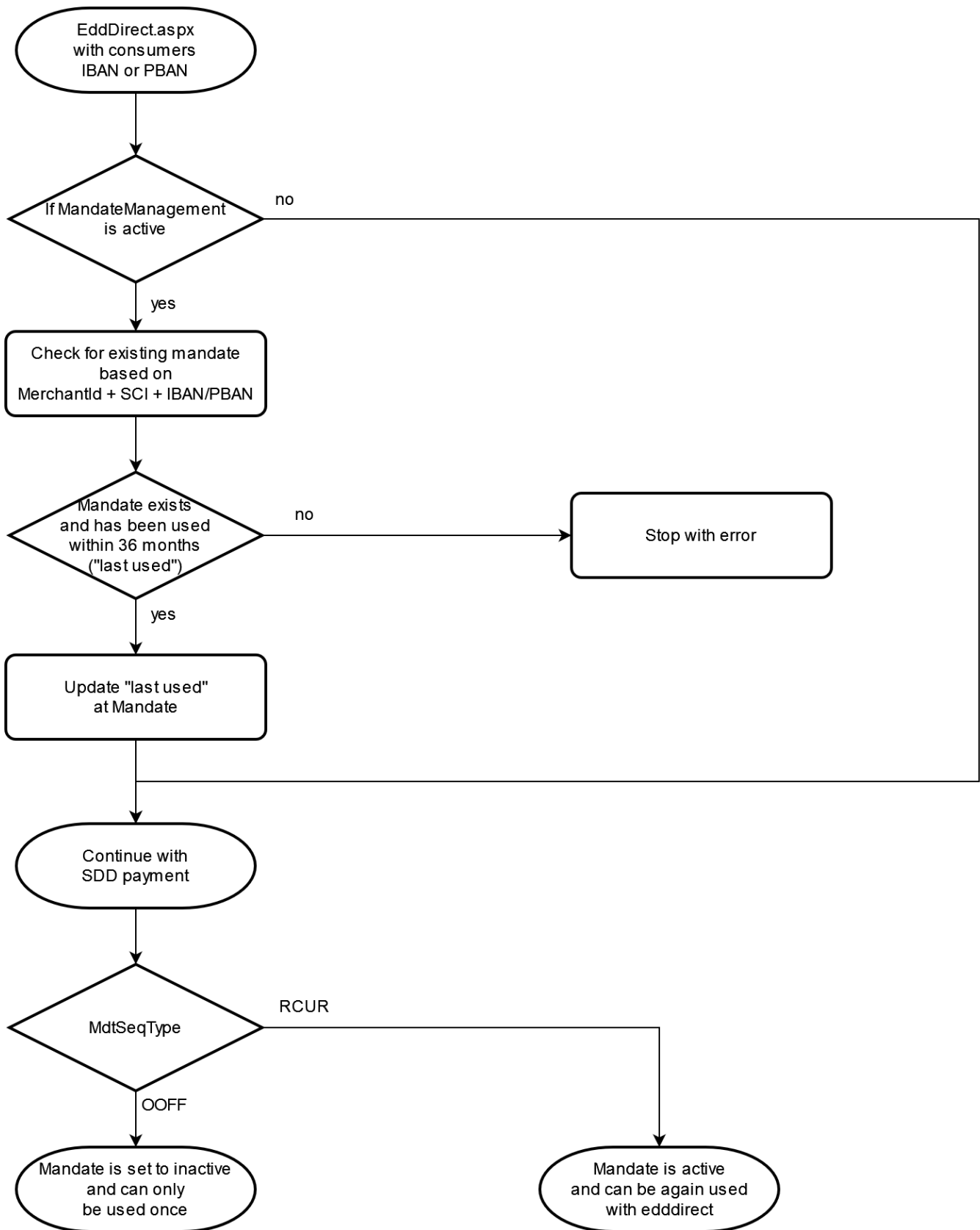


## Direct debit payments (edddirect.aspx) to use an existing mandate

**i** You may use an existing mandate which has been approved by the consumer earlier to initiate a SEPA Direct Debit payment. The mandate is related to your Merchant configuration and the IBAN of the consumer. Also the PseudoBankAccountNumber (PBAN) can be used to reference the SEPA Mandate.

- The SEPA Mandate has to be approved by the consumer already and it must still be valid (e.g. last used withing last 36 months)
- You can use consumer's IBAN to reference that mandate or use PBAN which has been generated by Computop Paygate for that IBAN.
- By creating a direct debit payment for this IBAN/PBAN the mandate is automatically updated and valid for another period of 36 months. For this use case the mandate has to be a recurring mandate ([MdtSeqType](#))

## Sequence diagram



## Languages

SEPA Direct Debit Mandates are supported in these languages:

Code	Description		Code	Description
de	German		hu	Hungarian
en	English		it	Italian
bg	Bulgarian		nl	Dutch
cs	Czech		pt	Portuguese
da	Danish		ro	Romanian
es	Spanish		sk	Slovak
fi	Finnish		sl	Slovenian
fr	French		sr	Serbian
hr	Croatian		sv	Swedish

\* Serbia is not part of SEPA area. So SEPA direct debit is not supported - just SEPA mandate is translated into serbian language.


## Testing and samples

### Testing

- we have a list of IBANs listed here that can be used to create a SEPA Mandate: [Test direct debit](#)
- A SEPA Mandate is
  - either valid for a single SEPA Direct Debit payment with MdtSeqType=OOFF
  - or valid for multiple SEPA Direct Debit payments within 36 months with MdtSeqType=RCUR

### Samples

	Description
<div style="border: 1px solid #ccc; padding: 10px;"> <p><b>SEPA direct debit with</b> <span style="background-color: #ccc; border-radius: 50%; padding: 2px 10px;">[REDACTED]</span></p> <p style="font-size: small; margin-bottom: 10px;">This page is SSL-encrypted in order to protect your data. </p> <p>Account holder <input style="width: 100%;" type="text"/></p> <p>IBAN <input style="width: 100%;" type="text"/></p> <p>BIC <input style="width: 100%;" type="text"/></p> <p>Bank (optional) <input style="width: 100%;" type="text"/></p> <p style="text-align: center; margin-top: 10px;"> <input type="button" value="About"/> <input type="button" value="Cancel"/> <input style="background-color: #0056b3; color: white; padding: 5px 15px;" type="button" value="Confirm"/> </p> </div>	<p>PaySdd form for consumer to enter Account Holder and IBAN</p>

  
the payment people

**SEPA Direct Debit Mandate**  
Creditor: Computop GmbH  
Identifier of the Creditor: DE98ZZZ09999999999  
Mandate Reference: eazn001vzd5

By signing this mandate form, you authorise (A) the Creditor to send instructions to your bank to debit your account and (B) your bank to debit your account in accordance with the instructions from the Creditor.

As part of your rights, you are entitled to a refund from your bank under the terms and conditions of your agreement with your bank. A refund must be claimed within 8 weeks starting from the date on which your account was debited. Your rights are explained in a statement that you can obtain from your bank.

asd asd

DE85100100100000000089

City

I hereby confirm the mandate for the payment.

Type of Payment:  recurrent or  one-off  
Date: 2024-02-27

Confirm

Cancel

Mandate form for consumer to enter city and approve SEPA mandate