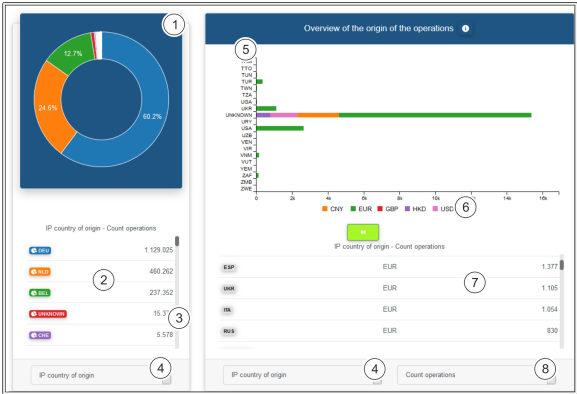


Showing country analyses

These charts give you a quick overview of the origin of your operations.

Overview of the origin of the operations



Application Button

The button at the bottom allows you to jump to the corresponding page within the application. You must be logged in to jump to the corresponding page within the application.

Computop Analytics

On this page

- Overview of the origin of the operations
- Detailed view of the origin of the transactions
- Trend according to the origin of the operations
- Complete view of the origin of the operations
- Country overview

In this section

- Dashboard overview screen
- Setting the dashboard filters
- Showing country analyses
- Showing the overview of all operations
- Showing the status of all operations
- Showing the trend
- Viewing statistics using the dashboard (optional)

Detailed view of the origin of the transactions

The following table shows you your transactions according to the different origin criteria.

1. Search function for each column

2. Export the current table contents as an Excel file

3. Configure column configuration
4. Filter setting for the origin category

Column configuration

You can use the "Column configuration" button to configure columns individually. The column headings highlighted in green are shown. Clicking them allows you to hide the columns shown. In turn, you can make the hidden column headings, which are highlighted in white, appear by clicking them.

Trend according to the origin of the operations

This evaluation shows you the trend in operations according to the different criteria for origin.



1. Countries of origin of the operations
2. Select the following types of chart: line chart, bar chart, curve chart and area chart
3. Select display by year, quarter, month, week and date as intervals
4. Origin category
5. Display by types of operation: authorised amount, captured amount, refunded amount and number of operations
6. Export the current table contents as an Excel file
7. Configure column configuration
8. Search function for each column

Showing and hiding countries of origin

You can hide individual countries of origin by clicking on them. Clicking on them again makes the countries of origin appear. The countries of origin that have been greyed out are hidden, and are not shown in the chart.

Interval

The interval "Date" shows the daily trend for the last 2 weeks.

Column configuration

You can use the "Column configuration" button to configure columns individually. The column headings highlighted in green are shown. Clicking them allows you to hide the columns shown. In turn, you can make the hidden column headings, which are highlighted in white, appear by clicking them.

Complete view of the origin of the operations

The following table shows you your combined operations according to the different origin criteria. The complete view provides you with the option of comparing the origin criteria with each other.

Year	Merchant	IP country of origin	IP Address	Credit cards country of origin	BIN	Currency	Payment method	Status	Action
2018	XXXXXXXXXX	BEL	5.x.x.10	BEL	54403025	EUR	MasterCard Identity Check	OK	AUTH
2018	XXXXXXXXXX	BEL	5.x.x.10	BEL	54403025	EUR	MasterCard Identity Check	OK	AUTH
2018	XXXXXXXXXX	BEL	5.x.x.10	BEL	54403025	EUR	MasterCard Identity Check	OK	AUTH
2018	XXXXXXXXXX	BEL	5.x.x.10	BEL	54403025	EUR	MasterCard Identity Check	OK	AUTH
2018	XXXXXXXXXX	BEL	5.x.x.10	BEL	54898000	EUR	MasterCard Identity Check	OK	AUTHENTICATE 00000000 1
2018	XXXXXXXXXX	BEL	5.x.x.28	BEL	67030514	EUR	MasterCard Identity Check	OK	CAPTURE 00000000 1

Showing 1 to 10 of 1,107,834 entries

Previous 1 2 3 4 5 ... 110784 Next

Year

1. Export the current table contents as an Excel file
2. Configure column configuration
3. Search function for each column
4. Select display by year, quarter, month, week and date as intervals

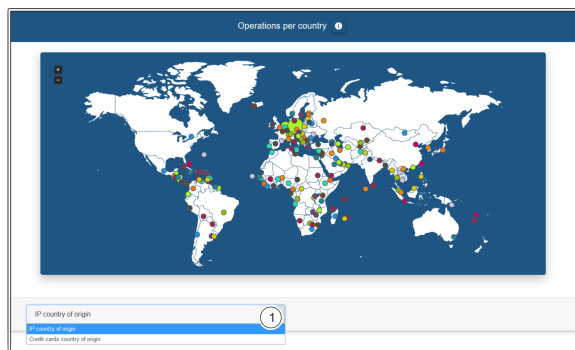


Column configuration

You can use the "Column configuration" button to configure columns individually. The column headings highlighted in green are shown. Clicking them allows you to hide the columns shown. In turn, you can make the hidden column headings, which are highlighted in white, appear by clicking them.

Country overview

The world map gives you a quick overview of the origins of the transactions. In this case, the capital city of the country of origin is highlighted and weighted in accordance with the number of operations. The larger the colour circle in a country is, the more operations were carried out.



1. Selection by type of origin: IP of the country of origin or the country of origin of the credit card

**Number of operations**

You can identify the number of operations by the size of the circle. The larger the circle, the more operations were carried out in that country.